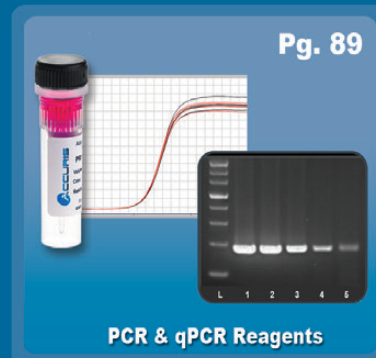


Accuris™ Instruments



Accuris™ Mini Balances



CE

- + Super compact, less than 3" wide
- + Easy to read, backlit LCD
- + Calibration function
- + Includes two AAA batteries
- + Snap on, protective cover



Optional in-lab calibration weights



Protective cover, included

Accuris Mini Balances are extraordinarily compact, easy to use, and convenient for a variety of laboratory weighing applications. With a footprint of only 2.6 x 3.9 inches, they offer exceptional accuracy and linearity through their full range.

Available with a 100g or 500g capacity, these balances feature an easy to read, backlit, digital liquid crystal display and an in-lab calibration function (weights

Ordering Information:

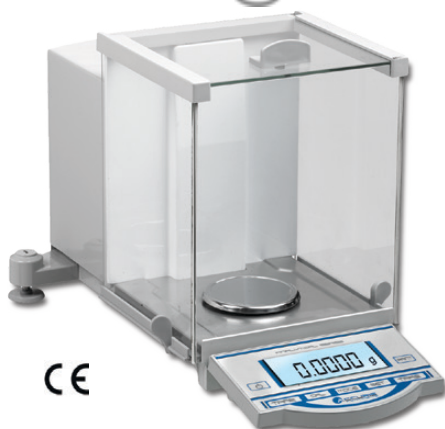
Item No.	Description:
W4000-100	Accuris™ Mini Balance, 100g capacity (0.01g readability)
W4000-500	Accuris™ Mini Balance, 500g capacity (0.1g readability)

Model	Mini 100g	Mini 500g
Max Capacity :	100 grams	500 grams
Readability:	0.01 g	0.1 g
Calibration:	External	
Pan Size:	2.1 x 2.25 in / 5.3 x 5.7 cm	
Weighing Units:	g, ct, dwt, gn	
Display:	backlit LCD	
Power:	2 AAA batteries	
Exterior Dims.:	2.6 x 3.9 x 0.75 in / 6.6 x 9.9 x 1.9 cm	

sold separately). ON/OFF, MODE & TARE buttons are easily accessed.

Powered by 2 AAA batteries (included), power shuts off after 1 minute of sitting idle to conserve battery life. Ideal for lab or field use, each balance includes a snap on, protective cover with convenient, printed instructions.

Accuris™ Classic Analytical Balances



CE

- + Readable to 0.0001g (0.1 mg)
- + Available with Quick-Cal™ internal calibration option
- + Multiple program options (standard weighing, count mode & percent)

Accuris Analytical Balances provide accuracy and precision for the most demanding research applications. Two capacity options are available, each incorporating a highly precise, electromagnetic force restoration sensor to deliver unsurpassed accuracy & readability to 0.0001g (0.1mg). Although all models incorporate in-lab calibration firmware, they are also available with a unique Quick-Cal™ function (Items: W3100A-120 & W3100A-210) that provides fast, reliable internal calibration with the push of a button.



Shield opens from the left, right, and top for easy access



Extended base, limits vibration & improves stability

Item No.*	W3100-120	W3100-210	W3100A-120	W3100A-210
Calibration	External (100g cal. weight included)		Internal Quick-Cal™	
Capacity	120 grams	210 grams	120 grams	210 grams
Readability	0.0001 grams		0.0001 grams	
Repeatability/Linearity	0.0001 / 0.0002		0.0001 / 0.0002	
Pan Size	Stainless Steel: 3.5 in. Ø (9cm)		Stainless Steel: 3.5 in. Ø (9cm)	
Weighing Units	g, oz, lb, ct, pieces, %		g, oz, lb, ct, pieces, %	
Draft Shield	Yes, glass		Yes, glass	
Exterior Dims. (W x D x H)	32 x 47 x 28 cm 12.5 x 18.5 x 11 in.		32 x 47 x 28 cm 12.5 x 18.5 x 11 in.	

*Includes US plug. For EU plug, please add (-E).

Accuris™ Series Dx & Tx Analytical Balances



CE

- + Readable to 0.01mg (W3002A-120)
- + Quick-Cal™ internal calibration
- + RS232 port for printer connection
- + Available with full color touch screen (series TX)

The Series Dx and Tx analytical balances are the most advanced in the Accuris line with a precision engineered Electromagnetic Force Restoration (EFR) weigh cell to accurately determine masses to sub milligram levels. Both series include internal calibration, ensuring that the balance is always calibrated and ready for use. Auto calibration can also be set to occur at specific time intervals depending on user preference. The Tx Series features a large, high resolution touch screen presenting the user with an icon-based menu system and allowing quick and intuitive access to a wide range of useful functions.

	Dx Series	Dx Series	Tx Series	Tx Series
Item No.*	W3101A-120	W3101A-220	W3002A-120	W3102A-220
Capacity	120 grams	220 grams	120 grams	220 grams
Readability	0.0001g (0.1mg)		62g x 0.01mg 120g x 0.1mg	220g x 0.1mg
Linearity	± 0.2mg		± 0.08mg ± 0.2mg	± 0.2mg
Repeatability	± 0.1mg		± 0.03mg ± 0.1mg	± 0.1mg
Calibration	Internal Quick Cal™ and External			
Pan Size (round)	80mm			
Weighing Units	g, mg, carats, oz, lbs, dwt, t oz, gn			
Display Type	5.25 x 1.5 in. backlit LCD		4.25 x 2.5 in. color touch screen	
Exterior Dims. (W x D x H)	34.29 x 21.59 x 33.02 cm 13.5 x 8.5 x 13 in.			

*Includes US plug. For EU plug, please add (-E).



High resolution touch screen



RS232 & USB port** for Printer, PC & flash drive connections
*USB on TX models only

AccuCheck™ Pipette Calibration System



Accuris Tx Semi-Micro Balance with built-in Pipette Check software



Anti Evaporation Trap (included)



Thermal Printer (optional)



The new AccuCheck System from Accuris Instruments gives your lab the freedom to calibrate pipettes quickly and when required. The system combines our popular Tx touch screen analytical balance with an anti evaporation trap accessory and built-in pipette calibration software. Together, this standalone pipette calibration system is easy for any lab tech to use for the ISO 8655 method of pipette calibration.

The user interface of the AccuCheck™ software is intuitive and requires no special training to use. Individual pipette details (brand, model, serial number) can be saved in the internal data base for current and future calibrations. The software walks the user through all steps of the gravimetric method, allows input of water temp, air temp, pressure, and humidity. It saves the weight values, and then performs all calculations for accuracy and precision at 3 volume settings. The Anti Evaporation Trap greatly improves results when performing the gravimetric method by preventing unstable measurements due to evaporation loss.

Ordering Information:

Item No.	Description:
W3002A-120ACS	AccuCheck Pipette Calibration System (W3002-120A Balance with integrated pipette calibration software and Anti Evaporation Trap)
W3130	Serial Printer for Accuris Balances

Removing the Anti Evaporation Trap allows the Tx Semi-Micro balance to be used for general weighing applications. Offering a maximum capacity of 120g, readability of 62gx0.01mg / 120gx0.1mg, and automatic internal calibration, the Tx balance is a favorite for labs needing fast and accurate weight determinations.

Accuris™ Compact & Precision Balances



Compact



Precision

Variable capacitance technology offers reliability, precision and fast stabilization

- + Large, user-friendly interface
- + Easy, in-lab calibration
- + RS232 port for data output and printing
- + Multiple program options (standard weighing, count mode, percent, etc.)

CE

Accuris **Compact** and **Precision** balances quickly and accurately display sample mass measurements on a large, backlit LCD control panel. Utilizing a highly precise, gold plated ceramic capacitance sensor, these balances can provide reliable measurements to 0.001 grams (Precision models). All models feature multiple program options for standard weighing, count (or pieces) mode, as well as percent calculation. In addition, each balance incorporates firmware for easy and reliable, in-lab calibration.

The economical **Compact** balances are ideal for a wide range of **general weighing** applications. They are available with a readability of 0.01g or 0.1g. Six models cover a range of up to 10,000 grams. With enhanced shock resistance and overload protection, the **Compact** series is ideal for general purpose weighing at medium precision, in varying environments.

The **Precision** series balances are designed for more critical laboratory applications. Engineered for true **research grade** weighing capabilities, these balances offer higher levels of precision and readability (0.01g and 0.001g). They are useful for any laboratory application that does not require a dedicated analytical balance with sub-milligram readability. Advanced software ensures error-free weighing for various applications, including count weighing, percent calculation and inspection mode.

Compact Balances

Item No.*	W3300-120	W3300-300	W3300-500	W3300-1200	W3300-5K	W3300-10K
Capacity:	120 grams	300 grams	500 grams	1200 grams	5000 grams	10000 grams
Readability:	0.01 grams	0.01 grams	0.01 grams	0.1 grams	0.1 grams	0.1 grams
Pan Size (round):	11.5cm / 4.5 in.			16cm / 6.3 in.	18cm / 7 in.	18cm / 7 in.
Repeatability/Linearity:	0.01 / 0.02			0.1 / 0.2		
Draft Shield:	Yes, plastic ring			No		
Weighing Units:	g, oz, ct, pieces, %					
Calibration:	External					
Exterior Dims.: (W x D x H)	18.8 x 28 x 8 cm 7.5 x 11 x 3.1 in.					

Precision Balances

Item No.*	W3200-120	W3200-320	W3200-500	W3200-1200	W3200-3200	W3200-5K
Capacity:	120 grams	320 grams	500 grams	1200 grams	3200 grams	5000 grams
Readability:	0.001 grams	0.001 grams	0.001 grams	0.01 grams	0.01 grams	0.01 grams
Pan Size (round):	11.5cm / 4.5 in.			16cm / 6.3 in.		
Repeatability/Linearity:	0.001 / 0.002			0.01 / 0.02		
Draft Shield:	Yes, 3-door glass enclosure			No		
Weighing Units:	g, oz, ct, pieces, %					
Calibration:	External					
Exterior Dims.: (W x D x H)	20.5 x 35 x 31cm 8 x 13.75 x 12.25 in.			20.5 x 35 x 8cm 8 x 13.75 x 3.1 in.		

*Includes US plug. For EU plug, please add (-E).

Accuris™ Calibration Weights



- + Various individual and weight sets available
- + Choose E2, F1, or M1 OIML class
- + Includes Certificate of Verification

Accuris calibration weights are ideal for routine calibration of your Accuris (or any brand) lab balance. Single weights as well as complete weight sets are available in various tolerance classes: OIML class E2, F1, and M1.



W1100-200

F1 Class: Suitable for precision 0.01 to 0.001g readability balances



W1106-100

E2 Class: Recommended for analytical 0.0001g readability balances



W1105-13-1000

M1 Class: Ideal for basic (compact) 0.1 to 0.01g readability balances



Individual weights come in a protective case. Weight sets include a protective carrying case with foam liner. All weights are supplied with a certificate of verification.

Ordering Information:

Item No.	Description:
W1000-100	Accuris™ Calibration Weight (F1 grade) 100g
W1000-200	Accuris™ Calibration Weight (F1 grade) 200g
W1000-500	Accuris™ Calibration Weight (F1 grade) 500g
W1000-1000	Accuris™ Calibration Weight (F1 grade) 1kg
W1005-1	Accuris™ Calibration Weight (M1 grade) 1g
W1005-2	Accuris™ Calibration Weight (M1 grade) 2g
W1005-5	Accuris™ Calibration Weight (M1 grade) 5g
W1005-10	Accuris™ Calibration Weight (M1 grade) 10g
W1005-20	Accuris™ Calibration Weight (M1 grade) 20g
W1005-50	Accuris™ Calibration Weight (M1 grade) 50g
W1005-100	Accuris™ Calibration Weight (M1 grade) 100g
W1005-200	Accuris™ Calibration Weight (M1 grade) 200g
W1005-500	Accuris™ Calibration Weight (M1 grade) 500g
W1005-1000	Accuris™ Calibration Weight (M1 grade) 1kg
W1005-2000	Accuris™ Calibration Weight (M1 grade) 2kg
W1000-TF	Tweezers, for handling calibration weights
W1100-200	Calibration set for Precision Balances (Class F1) 23 pcs, 1mg to 200g, includes protective case, tweezers, dust brush and cleaning cloth
W1101-6-100	Calibration set for Analytical Balances (Class E2) 6 pcs: 100mg, 10g, 2x20g, 50g, 100g, incl. protective case, tweezers & cleaning cloth
W1105-13-1000	Economy calibration set for compact balances (Class M1), 13 pcs: 1x1g, 2x2g, 1x5g, 1x10g 2x20g, 1x50g, 1x100g, 2x200g, 1x500g, 1x1kg, includes protective case

ASPIRE™ Laboratory Aspirator



CE

- Compact design
- Built-in vacuum pump
- Adjustable vacuum control
- Vacuum gauge
- Overflow protection
- Autoclavable

*Quietly and safely
aspirate liquids*



Comes complete with:

Base with internal vacuum pump
2 Liter, polycarbonate collection bottle
Antibacterial / hydrophobic filter
Silicone tubing
Handheld vacuum controller (A)
Adapter for 200µl pipette tips (B)
Adapter, fine stainless steel, 40mm (C)

Included



A

Optional



B

C

D

E

F

Ordering Information:

Item No.	Description:
V0020*	ASPIRE™ Laboratory Aspirator, 115V Includes base with internal vacuum pump, 2L polycarbonate bottle with lid, silicone tubing, handheld vacuum controller and single channel adapters
V1002-1SL	Optional single channel adapter, X-long (80mm) stainless steel (D)
V1002-S8	Optional eight channel adapter, fine tip stainless steel (E)
V1002-8	Optional 8-channel adapter, for use with 200µl pipette tips (F)
V1002	Handheld vacuum controller with single channel adapters (A, B, C / included), can be used with in house systems
V0020-F1	Hydrophobic filter, 1/pk (one included with V0020)
V0020-QD	Optional quick disconnect kit for collection bottle, includes 2 male/female attachments & silicone tubing
V0020-BOT	Graduated, PC collection bottle with lid (included)
V0020-TB	Extra vacuum tubing with connector, 1 meter

*115V with US plug. For 230V (EU plug), add (-E).

Technical Data:

Max. Aspiration Rate:	14ml / sec.
Max. Flow Rate:	15L / min.
Vacuum Range:	-30mbar to -750mbar
Noise Level:	59.6 db
Dimensions: (W x D x H)	9.5 x 7.9 x 13.5 in. 24 x 20 x 34 cm
Weight:	4.8lbs (2.2kg)
Electrical:	115V, or 230V, 50Hz to 60Hz
Warranty:	2 years

NextPette™ Precision Pipettes

- Market leading accuracy and precision
- One-handed, thumb wheel volume adjustment
- Volume lock
- Ceramic pistons (on 20, 100, 200 and 1000µl models)

NEXTPETTE™



Fully Autoclavable

Ordering Information & Technical Data:

Item No.*	Description:	Inaccuracy:	Imprecision:	Tip Size:
P7700-1	NextPette™ Variable Volume Pipette 0.1 to 1.0 µl	± 20 to 2%	± 12 to 1.2%	10 µl
P7700-10	NextPette™ Variable Volume Pipette 0.5 to 10 µl	± 3.8 to 0.5%	± 4 to 0.5%	10 µl
P7700-20	NextPette™ Variable Volume Pipette 2 to 20 µl	± 3 to 0.8%	± 3 to 0.8%	200 µl
P7700-100	NextPette™ Variable Volume Pipette 10 to 100 µl	± 1.5 to 0.8%	± 1.5 to 0.8%	200 µl
P7700-200	NextPette™ Variable Volume Pipette 20 to 200 µl	± 1.2 to 0.6%	± 1.0 to 0.6%	200 µl
P7700-1000	NextPette™ Variable Volume Pipette 100 to 1000 µl	± 1.5 to 0.6%	± 1.0 to 0.6%	1000 µl
P7700-5M	NextPette™ Variable Volume Pipette 1ml to 5ml*	± 0.6 to 0.5%	± 0.6 to 0.5%	5 ml*
P7700-10M	NextPette™ Variable Volume Pipette 1ml to 10ml**	± 2.5 to 0.5%	± 2.0 to 0.5%	10 ml**
P7700-CAR	NextPette™ Carousel stand holds 6 NextPette Pipettes			
P7700-S1	Micro NextPette™ Starter Set, includes 4 pipettes (P7700-10, P7700-20, P7700-200 and P7700-1000) and a carousel stand			
P7700-S2	Macro NextPette™ Starter Set, includes 4 pipettes (P7700-200, P7700-1000, P7700-5M*, P7700-10M**) and a carousel stand			
P7700-T5M	5ml Pipette Tips, fit 1ml to 5ml NextPette, (P7700-5M), 100 per pack			
P7700-T10M	10ml Pipette Tips, fit 1ml to 10ml NextPette (P7700-10M), 100 per pack			

*Requires pipette tip P7700-T5M

**Requires pipette tip P7700-T10M



Large, 4 digit volume display faces the user



QuadCount™ Automated Cell Counter



- + Compatible with most common mammalian cell lines
- + Fast, accurate and reproducible results
- + Intuitive software and touch-screen interface
- + Convenient and cost-effective QuadSlides™
- + Count sample volumes up to 3.6ul

With count speeds as fast as 20 seconds per sample, the Accuris QuadCount provides many advantages over the tedious and time consuming manual hemocytometry method. The advanced software eliminates human bias in dead/live determinations, reduces counting errors, saves time, and improves efficiency. Cells are also measured during each count.

The QuadCount utilizes a unique 4-chambered disposable QuadSlide™. Four samples can be processed in one slide (twice the capacity of standard 2-chambered slides), decreasing consumable costs. Each chamber has a hydrophilic inner surface with an engraved grid pattern. High precision production and molding ensure that each QuadSlide meets the rigorous standards and dimensional tolerances required for optimal counting performance.

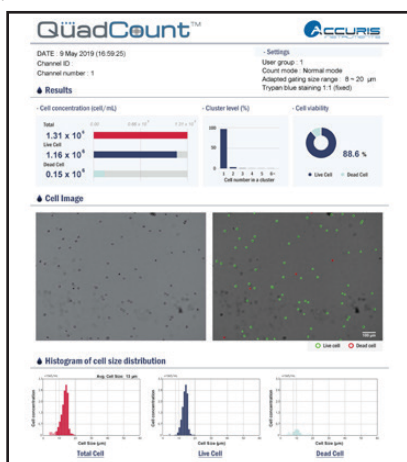
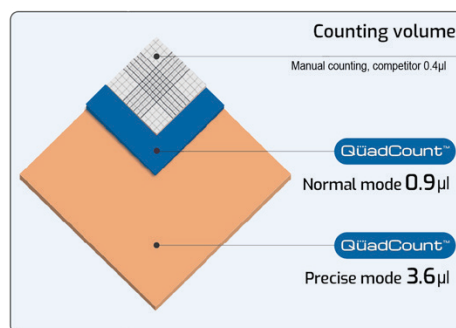
3 count modes available to analyze different sample volumes:

Quick Mode:	0.15uL / 20 seconds (1 image frame)
Normal Mode:	0.9uL / 30 seconds (6 image frames)
Precise Mode:	3.6uL / 100 seconds (24 image frames)

The QuadCount's ability to analyze larger sample volumes/multiple images, provides significantly better accuracy than other cell counters.



Four chambered QuadSlide™



PDF reports can be exported

Technical Data:

Optics:	High quality 4x objective lens
Pixel Resolution:	2592 x 1944
Image Detection:	5 mega pixel CMOS sensor
Illumination:	Green LED (50,000 hour life)
Sample Volume:	20ul (4 samples per QuadSlide)
Max. Counting Volume:	3.6ul (24 image captures)
Consumable Slide:	QuadSlide, 4-chamber
Counting Modes/Speeds:	Quick (20 sec), Normal (30 sec), Precise (100 sec)
Dynamic Range:	1 x 10 ⁴ to 1 x 10 ⁷ cells per ml
Data Output:	USB drive for PDF report
Dimensions: (W x D x H)	6.4 x 11.5 x 8.5 in. 16.3 x 29.3 x 21.6 cm
Weight:	11 lbs (4.9kg)
Electrical:	115V or 230V, 50Hz to 60Hz
Warranty:	2 years

Ordering Information:

Item No.*	Description:
E7500*	QuadCount™ Automated Cell Counter, 115V
E7500-S1	QuadSlides, 50/pk.
E7500-ST51	Standard test slide for QuadCount™, 1/pk

*115V with US plug. For 230V (EU plug), add (-E).

INFORMACION@JBLABSAC.COM-WWW.JBLABSAC.COM

SmartReader™ 96 Microplate Absorbance Reader



CE

New model, MR9600-T, now available with temperature control for plate incubation.

Ordering Information:

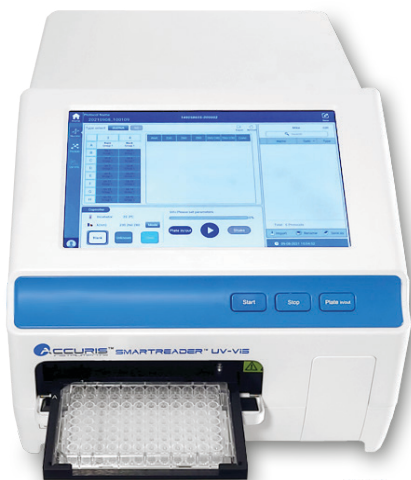
Item No.*	Description:
MR9600*	SmartReader™ 96 Microplate Absorbance Reader for 96 well plates, 115V
MR9600-T*	SmartReader™ 96 Microplate Absorbance Reader, with Temp. Control, 115V
MR9600-PC	SmartReader PC Software for MR9600 and MR9600-T
MR9600-TP	Thermal Printer for SmartReader 96

*115V with US plug. For 230V (EU plug), add (-E).

Technical Data:

Control and Display:	7" touch screen, 800 x 480 pixels
Light Source:	Quartz halogen lamp, 6V/10W
Wavelength Range:	340-750nm (405, 450, 492 and 630nm filters included)
Read Speed:	<6 sec. for 96 well plate
Temp. Control:	+5 to 50°C / Accuracy ±0.5°C @ 37°C Uniformity ±0.5°C @ 37°C
Shaking:	3 modes: slow (3.5Hz), medium (4.7Hz), fast (7.0Hz)
Dimensions: (W x D x H)	11.6 x 17 x 8.75 in. 29.5 x 44 22.5 cm
Weight:	22 lbs (10kg)
Electrical:	115V or 230V, 50Hz to 60Hz
Warranty:	2 years

SmartReader™ UV-Vis Microplate Reader



CE

- + Intuitive color touch screen control
- + Accepts both 96 and 384-well plates
- + Monochromator system, wavelength range 200-1000nm
- + Stand-alone system with USB flash drive for data transfer



SmartDrop™ plate for checking nucleic acid and protein concentration/purity using small sample droplets.

Ordering Information:

Item No.*	Description:
MR9610*	SmartReader™ UV-Vis Microplate Reader, for 96 and 384 Well Plates, 115V

*115V with US plug. For 230V (EU plug), add (-E).

Technical Data:

Plates Accepted:	96-well and 384-well flat bottom, and SmartDrop™ plate
Control and Display:	10" touch screen
Light Source:	Xenon Flash Lamp
Wavelength Range:	200-1000nm with 1nm steps
Wavelength Selection:	Monochromator
Plate Shaking:	Linear; three options for speed
Incubator:	From ambient + 5°C to 45°C
Ports:	3 USB ports, for PC, printer and flash drive
Dimensions: (W x D x H)	12 x 19.5 x 11.5 in. 300 x 500 x 290 mm
Weight:	33 lbs (15kg)
Electrical:	DC24V, 6.5A (100 to 240 VAC input)
Warranty:	2 years

SmartWasher™ 96 Microplate Washer



- + Quick set up and easy programming
- + Compatible with U, V, C, and flat bottom 96 well plates
- + Flexible programming for full plate, partial plate, or strip washing
- + Choose 8-channel or 12-channel wash head
- + Individually controlled wash and rinse sources

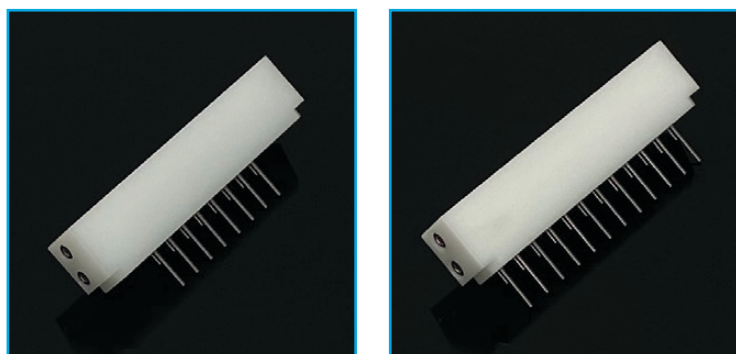
CE

Research requires flexibility – the SmartWasher™ 96 provides it. Full plates, partial plates, and strips with U, V, C, or flat bottoms are accepted by this fully automated washer. Multiple aspiration point settings allow for minimal residual liquid in the wells after aspiration. All parameters, including dispense volume, suction time, soak and shake cycles, and shaking speed are easily programmed using the large 4.3" LCD display and keypad. Up to 100 wash protocols can be stored on board the SmartWasher™ 96 and recalled when needed, or transferred between machines with a flash drive.

The washer comes equipped with 2 wash bottles, 1 rinse bottle and a waste bottle. All have sensors that alert the user when the solutions are low, or in the case of the waste bottle, when it needs to be emptied. An auto-rinse function primes the dispensing tube and wash heads to prevent cross contamination and clogs.

8- and 12-channel manifolds (purchased separately) accommodate plates in either orientation. A transparent, acrylic shield surrounds the wash area, allowing for visualization of the plate. Should a spill or leak occur, the beveled spill well ensures that the liquid is extracted immediately to avoid cross-contamination.

The SmartWasher™ 96 is the perfect partner for the SmartReader™ 96 Microplate Absorbance Reader as well as other popular readers.



8- and 12-channel manifolds, purchased separately, are available to accommodate different plate orientations

Technical Data:

Control and Display:	4.3-inch LCD display
Wash Heads:	8 channel or 12 channel
Wash Modes:	1 point, 2 point, or 3 point aspiration
Compatible Micro-plates:	96 wells, standard SBS dimensions
Residual Liquid Volume:	≤ 1 ul (each well)
Dispensing Volume Range:	50ul – 2000 ul
Wash Cycles:	1 ~ 99 cycles
Program Storage Capacity:	100 programs
Rinse Function Time Range:	00:00 ~ 03:59 (mm : ss)
Soak & Shaking Time Range:	00:00 ~ 99:00 (mm : ss)
Wash Bottle Level Warning:	Yes, sensors included in wash and rinse bottles
Wash Solution Channels:	3 bottles
Waste Bottle Level Warning:	Yes; sensors detect when waste bottle is full
Waste Application:	Yes
Dimensions: (W x D x H)	13.5 x 18 x 8.5 in. 345 x 460 x 200 mm
Weight:	25.3 lbs (11.5kg)
Electrical:	115V or 230V, 50Hz to 60Hz

Ordering Information:

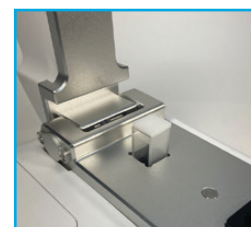
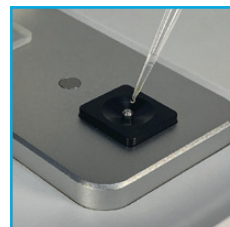
Item No.	Description:
MW9600*	SmartWasher 96 for 96 Well Plates, 115V (Wash heads sold separately)
MW9600-8CM	8 channel manifold
MW9600-12CM	12 channel manifold

*115V with US plug. For 230V (EU plug), add (-E).

SmartDrop™ Nano Spectrophotometer



- + Three models to meet various application requirements
- + Quick, accurate, easy to use
- + Large color touch screen
- + Use 0.5-2.0 µl sample droplets
- + Ideal for DNA/RNA and Protein analysis
- + Cuvette port for OD600 readings (bacteria concentration)



Accuris SmartDrop™ nano spectrophotometers are compact and easy-to-use instruments for quick and accurate readings using small volumes of sample. A droplet of sample is placed onto the sensor pedestal, the SmartDrop arm is lowered, and results are immediately displayed, saved, or printed using the on-board printer.

User-friendly software and an intuitive interface allows for quick set-up and determination of nucleic acid concentration (260nm absorbance) and purity (260/280nm ratio). In addition to common nucleic acid applications, the SmartDrop™ can also be used for determining protein purity using 280nm absorbance results. The SmartDrop models X and XF both have full wave-length 200-800nm scan capability within 6 seconds. The XF models includes fluorescence detection for accurate quantification of concentrations of nucleic acids, down to 0.5pg/µl. A separate cuvette port for 600nm absorption readings is built into each instrument, expanding the usage of the SmartDrop™ for bacteria concentration evaluation and growth assays.

Results and data can be stored and organized in the onboard file memory or transferred via a USB drive to a PC for storage or further analysis. The built-in thermal printer is a unique feature to allow results to be printed immediately after analysis for adding to a lab notebook.

Ordering Information:

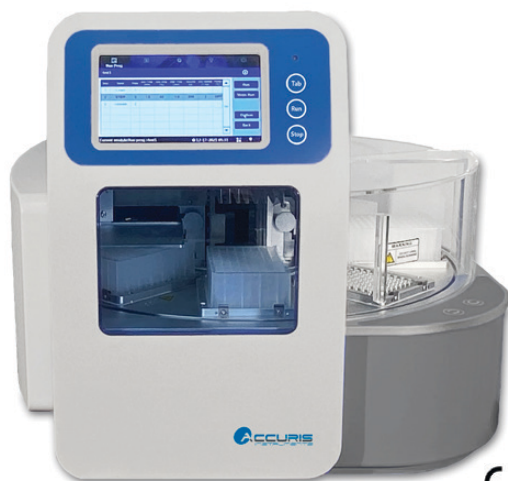
Item No.	Description:
NS1000*	SmartDrop™ L Nano Spectrophotometer
NS1010*	SmartDrop™ X Nano Spectrophotometer
NS1020*	SmartDrop™ XF Nano Spectrophotometer

*115V with US plug. For 230V (EU plug), add (-E).

Technical Data:

	NS1000 (SmartDrop™ L)	NS1010 (SmartDrop™ X)	NS1020 (SmartDrop™ XF)
Wavelength:	260, 280, 365, 600nm	200-800nm	200-800nm
Sample Size:	1.0µl to 2.0µl	0.5µl to 2.0µl	0.5µl to 2.0µl
Path Length:	0.5mm	0.2 & 1.0mm	0.05, 0.2 & 1.0mm
Measurement Time:	< 6 sec.	< 6 sec.	< 6 sec.
Wavelength Accuracy:	1nm	1nm	1nm
Absorbance Precision:	0.005Abs	0.003Abs	0.003Abs
Absorbance Accuracy:	1% (7.332Abs at 260nm)	1% (7.332Abs at 260nm)	1% (7.332Abs at 260nm)
Optical Detector:	UV Silicon Photocell	2048-Linear CCD array	2048-Linear CCD array
Light Source:	LED	Xenon Flash Lamp	Xenon Flash Lamp
Detection Range dsDNA:	10-2500ng/µl	2-4500ng/µl	2-15000ng/µl
Printer:	Built in printer	Built in printer	Built in printer
Cuvette OD 600nm	Yes	Yes	Yes
Light Source:	LED	LED	LED
Absorbance Range:	0-4.0A	0-4.0A	0-4.0A
Wavelength:	600 +/- 8nm	600 +/- 8nm	600 +/- 8nm
Fluorescence DNA Quantitation	N/A	N/A	Yes
Sensitivity	N/A	N/A	dsDNA: 0.5pg/µl
Linearity	N/A	N/A	R ² ≥ 0.995
Repeatability	N/A	N/A	≤ 1.5%
Dimensions:	8.2 x 11.0 x 7.3 in. 20.8 x 28.0 x 18.6cm	8.2 x 11.0 x 7.3 in. 20.8 x 28.0 x 18.6cm	8.2 x 12.6 x 7.3 in. 20.8 x 32.0 x 18.6cm
Weight:	7.9 lbs. (3.6kg)	7.9 lbs. (3.6kg)	7.9 lbs. (3.6kg)

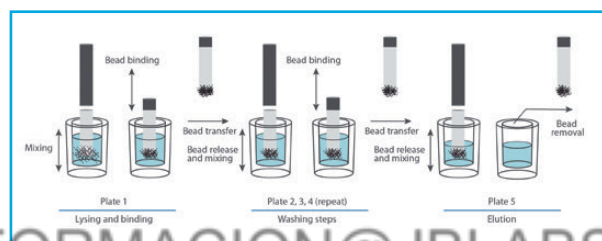
IsoPure™ 96 Nucleic Acid Purification Systems



CE

- Operates as a stand-alone system, or connect to PC for programming
- 8-position carousel for deep well sample plates
- Intuitive programming and operation on a user-friendly touch screen
- Reliable and automated processing of up to 96 samples

The IsoPure™ 96 from Accuris Instruments is a high throughput automated purification system that improves efficiency and reproducibility of magnetic bead extractions. Capable of processing up to 96 samples at one time, the instrument is easy to set up and program. Mixing, magnetic bead transfer, washing and elution steps are performed automatically, saving valuable hands-on time. The complete purification process can be finished in as little as 10 minutes (depending on the reagent kit and complexity of the program.)



IsoPure™ Mini Purification System

- Compact design takes up only 8 x 10 in. of bench space
- Intuitive programming on a user-friendly touch screen
- Higher yields and reproducibility than manual extraction methods
- Fast and reliable sample processing

The IsoPure™ Mini from Accuris Instruments is an extremely compact, automated purification system that improves efficiency and reproducibility of magnetic bead extractions. Capable of processing up to 16 samples at one time, the instrument is easy to set up and program. Mixing, magnetic bead transfer, washing and elution steps are performed automatically, saving valuable hands-on time. The complete purification process can be finished in as little as 10 minutes (depending on the reagent kit and complexity of the program.)



CE

Ordering Information:

Item No.	Description:
AP1096*	IsoPure™ 96, Automated Purification System
AP1096-DWP	96 deep well plates for IsoPure™, 50/cs.
AP1096-TC	Tip Comb for IsoPure™ 96, 50/cs.
AP-1016*	IsoPure™ Mini, Automated Purification System
AP1096-DWP	96 deep well plates for IsoPure™, 50/cs.
AP1016-6W	6-well sample strips, 100/cs.
AP1016-MC	8-place magnetic tip comb for IsoPure Mini, 50/cs.
AP1016-TAB	Android tablet preloaded with IsoPure™ app

*115V with US plug. For 230V (EU plug), add (-E).

Technical Data:	IsoPure™ Mini	IsoPure™ 96
Capacity / Sample Volume:	16 samples / 20µl to 1000µl	96 samples / 20µl to 1000µl
Magnetic Bead recovery rate:	>95%	
Lysis Temperature range:	RT to 120°C	
Elution Temperature range:	RT to 120°C	
Display:	4.3 inch color screen	7.0 inch color screen
Programming Control:	Bluetooth, Android tablet	Touch screen/mouse, or PC connection
Program Memory:	100 programs	
Communication:	USB	
Internal Lighting:	LED	
Contamination Control:	UV Sterilization	
Electrical Input:	Universal 120 to 240V, 50 to 60Hz	
Dimensions: (W x D x H)	7.9 x 10.2 x 11.8 in. (20 x 26 x 30 cm)	22 x 24.5 x 19.7 in. (56 x 62 x 50 cm)
Weight:	15.4 lbs. (7kg)	119 lbs. (54kg)
Warranty:	2 years	

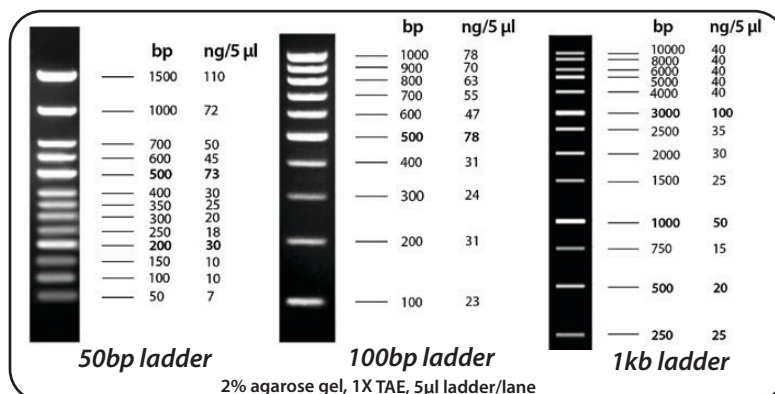
SmartCheck™ DNA Ladders



- + Three size ranges: 50bp, 100bp and 1kb
- + Ready to use formulation includes loading buffer and tracking dye
- + Higher intensity reference bands
- + Concentration of 1µg/µl - load 5µl/lane
- + Ultra pure production allows for economical ambient shipping

Ordering Information:

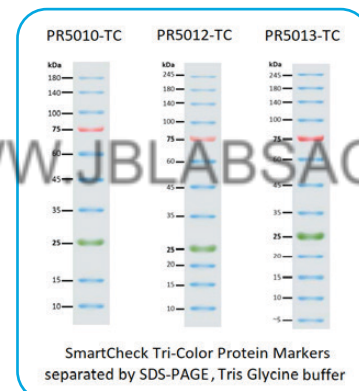
Item No.	Description:
PR4005-100	SmartCheck™ 50bp ladder, 500µl, 100 lanes
PR4005-500	SmartCheck™ 50bp ladder, 5x500µl, 500 lanes
PR4010-100	SmartCheck™ 100bp ladder, 500µl, 100 lanes
PR4010-500	SmartCheck™ 100bp ladder, 5x500µl, 500 lanes
PR4100-100	SmartCheck™ 1kb ladder, 500µl, 100 lanes
PR4100-500	SmartCheck™ 1kb ladder, 5x500µl, 500 lanes



SmartCheck™ Protein Markers

Ordering Information:

Item No.	Description:
PR5010-BL	SmartCheck™ Blue Protein Marker, 10 bands 9-180 kDa, 2x250ul
PR5011-BL	SmartCheck™ Blue Protein Marker, 11 bands 9-180 kDa, 2x250ul
PR5010-TC	SmartCheck™ Tri-color Protein Marker, 10 bands 9-180 kDa, 2x250ul
PR5012-TC	SmartCheck™ Tri-color Extended Range Protein Marker, 12 bands 9-245 kDa, 2x250ul
PR5013-TC	SmartCheck™ Tri-color Extended Range Plus Protein Marker, 13 bands 9-245 kDa, 2x250ul



Convenient, premeasured packs



Just add pouch contents to water and stir to dissolve

QuickSilver™ Powdered Buffers

- + Premeasured pouches with quick dissolving powder
- + Makes 1L of ready to use 1X solution
- + No pH adjustment needed
- + Economical shipping with long shelf life
- + Guaranteed quality and consistency batch to batch

Ordering Information:

Item No.	Description:
EB1000	TAE Buffer Powder, each pouch makes 1L of 1X, 100 pouches
EB1001	TBE Buffer Powder, each pouch makes 1L of 1X, 50 pouches
EB1100	Tris-Glycine-SDS Buffer Powder, each pouch makes 1L of 1X, 50 pouches
EB1200	PBS Buffer Powder, each pouch makes 1L of 1X, 100 pouches
EB1201	PBS-T Buffer Powder, each pouch makes 1L of 1X, 100 pouches
EB1202	TBS Buffer Powder, each pouch makes 1L of 1X, 100 pouches
EB1203	TBS-T Buffer Powder, each pouch makes 1L of 1X, 100 pouches

MYGEL™ mini



- + Complete system
(Includes gel tank, power supply & casting accessories)
- + Quick and easy gel casting
(No spacers or clamps required)
- + Compact design, 7.5 x 5 in. footprint

The Accuris myGel Mini Electrophoresis System includes all the equipment you need to get up and running - gel tank, power supply and 2 complete casting sets. Ideal for personal use, small laboratories, or the classroom, this gel box/power supply combination is compact and easy to use.

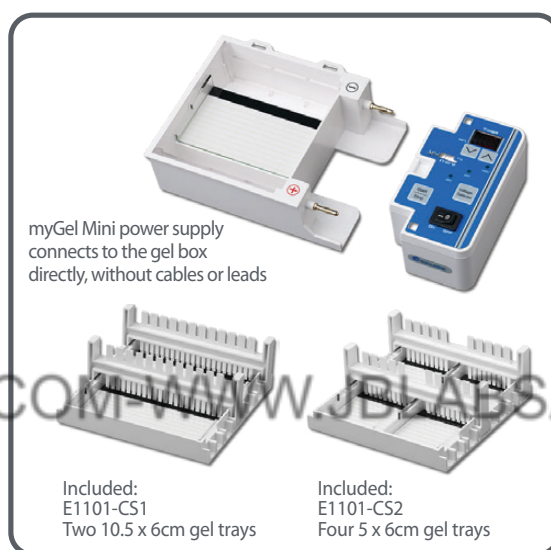
The myGel Mini power supply attaches directly to the gel box for a secure connection every time. Selectable parameters include 3 preset voltages - 35, 50 and 100V - and a 99 minute timer. Parameters are set using the membrane keypad. The safety lid is vented to dissipate heat generated during electrophoresis, and features a viewing area above the gel. Current will only run through the system when the lid is properly in place on top of the gel box.

Trays and casting stands for both 10.5 x 6 cm and 5 x 6 cm gels are included with the myGel Mini system, as are double sided combs. The smaller tooth combs are compatible with multichannel pipettes. An optional casting set is available for 10.5 x 10cm gels. Casting is quick and easy - just place the tray in the casting stand and pour. The gel trays feature a dark contrast strip to help visualize wells while loading, and lines that fluoresce under UV and blue light to track the progress of the run.

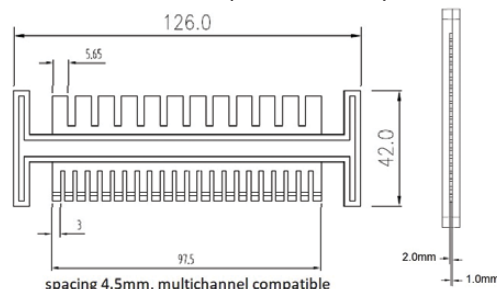
Ordering Information:

Item No.	Description:
E1101*	MyGel™ Mini Electrophoresis System, complete with E1101-CS1 and E1101-CS2, 115V
myGel Mini includes all of the below casting accessories:	
E1101-CS1	Extra casting set, for 10.5 x 6cm gels, includes two trays and two combs (22*/12 teeth)
E1101-COMB1	Extra double sided combs, 22*/12 teeth, for E1101-CS1 and E1200-CS1 casting sets, pk 2 (multi-channel compatible)
E1101-CS2	Extra casting set, for 5 x 6cm gels, includes four trays and two combs (18*/10 teeth)
E1101-COMB2	Extra double sided combs, 18*/10 teeth, for E1101-CS2 casting set, pk 2 (multi-channel compatible)
Additional casting set available:	
E1200-CS1	Casting set for 10.5 x 10cm gels, includes one tray and 2 combs (22*/12 teeth)

*115V with US plug. For 230V (EU plug and step down transformer), add (-E).
*Multi-channel compatible



Comb Dimensions (E1101-COMB1)

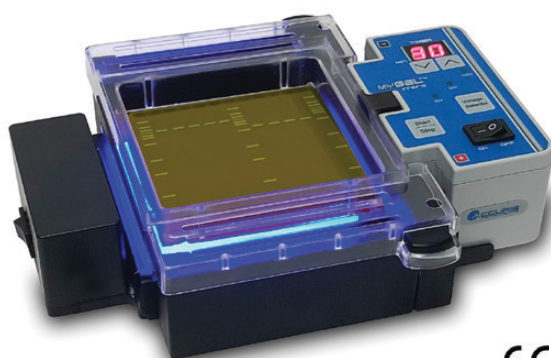


Large teeth: 5.65x1mm, well volume 22.6µl for 0.5mm thick gel
Small teeth: 3x1mm, well volume 12µl for 0.5cm thick gel
3mm wide teeth taper from 2mm to 1mm at tip

Technical Data:

Output Voltage:	35V, 50V or 100V
Timer:	0-99 minute or continuous
Safety:	Magnetic and mechanical lid interlock
Max. Buffer Volume:	230 ml
Gel Capacity:	One 10.5 x 6cm, one 10.5x10cm or two 5 x 6cm
Dimensions: (W x D x H)	7.5 x 5.1 x 2.1 in. 19 x 13x 5.5 cm
Weight:	1 lbs (.45kg)
Electrical:	115V, 60Hz or 230V, 50Hz
Warranty:	2 years

myGel™ Mini InstaView™ Electrophoresis System



CE

- + Complete system to run, visualize *and* document mini gels
- + Includes direct connect power supply, gel tank w/orange filter cover, casting set, blue light LED illuminator and smart phone imaging enclosure
- + View DNA migration and separation at any time during a run
- + Capture high resolution smart phone images without removing the gel from the tank

The new Accuris myGel Mini InstaView Electrophoresis System is a revolutionary product that allows viewing DNA separation as it happens. No longer is it necessary to stop your electrophoresis, remove the gel, and place it on a transilluminator to check the progress of the run.

The system's gel running tank is designed with a clear bottom and shaped to mate with the included LED transilluminator. The transilluminator's bright 465nm wavelength provides optimal excitation for common green fluorescent DNA stains (such as Accuris SmartGlow™, SYBR™ Green, Gel Green, and many others). The safety cover with orange viewing filter fits onto the top of the tank, and the recessed filter contacts the top surface of the buffer. This eliminates the possibility of fogging, and allows clear visualization of stained DNA as it migrates and separates. Results can be documented with a smart phone camera using the included imaging enclosure.

Ordering Information:

Item No.	Description:
E1201*	MyGel™ Mini InstaView™ Electrophoresis System, complete with gel tank, power supply, E1200-CS1 casting set, blue LED transilluminator and imaging enclosure, 115V
E1200-CS1	Extra casting set, for 10.5x10cm gels, includes casting stand, gel tray and 2 double sided combs, (22"/12 teeth)
E1101-COMB1	Extra double sided combs, 22"/12 teeth, pack of 2

*Multi-channel compatible

*115V with US plug. For 230V (EU plug and step down transformer), add (-E).

Technical Data:

Output Voltage:	35V, 50V or 100V
Timer:	0-99 minute or continuous
Safety:	Magnetic switch
Max. Buffer Volume:	250 ml
Gel Capacity:	One 10.5x10cm gel, 0.5cm thick
Excitation Wavelength:	465nm
Dimensions with Enclosure: (W x D x H)	10x8.25x5.5 in/25.5x21x14cm
Weight:	2.3 lbs (1.04kg)
Electrical:	115V, 60Hz or 230V, 50Hz
Warranty:	2 years

InstaView™ Gel Tank

- + View sample migration *during* electrophoresis
- + Includes gel tank, blue LED transilluminator, orange filter cover and imaging enclosure
- + Capture high resolution smart phone images without removing the gel from the tank
- + Compatible with any basic power supply

E2301



E1200

Ordering Information:

Item No.	Description:
E1200*	InstaView™ Gel Tank, complete with tank, 10.5x10cm gel tray and casting set, 2 double sided combs (22"/12 teeth,) orange filter, blue LED transilluminator and imaging enclosure (7.25x8.25x5.5 in/18.4x21x14cm with imaging enclosure), 115V
E2301*	myVolt™ Touch Power Supply, 1 to 300V, 400mA, 100W
E1200-CS1	Extra casting set, for 10.5x10cm gels, includes casting stand, gel tray and 2 double sided combs, (22"/12 teeth)
E1101-COMB1	Extra double sided combs, 22"/12 teeth, pack of 2
E1200-OC	Orange filter cover for mini LED transilluminator

*Multi-channel compatible
*115V with US plug. For 230V add (-E).

UV Transilluminators

UV TRANSILLUMINATORS

For Viewing DNA and Protein in Electrophoresis Gels



E3000

E3100

- + 302nm midrange UV wavelength
- + Optimal for EtBr, SmartGlow, or SYBR
- + Dual intensity settings, (50% or 100%) (E3000 model)
- + Hinged UV safety cover
- + Use with SmartDoc™ enclosure for gel imaging with a smart phone (pg. 87)



Optional viewing glasses

The **E3100 myView™** incorporates four 6W bulbs coupled with a reflector system and special diffusing filter glass to provide exceptional uniformity across the viewing surface. This allows for quantification of DNA and also higher quality imaging when using a camera system.

Users are protected from harmful effects of UV radiation by the hinged, UV blocking safety cover. Two friction hinges on the front edge of the cover allow for easy adjustment of the cover angle. Position the cover horizontally for general viewing, tilt it at an angle for gel access and band cutting, or fully open to use the SmartDoc™ Imaging Enclosure and filters (sold separately) for gel imaging with a smartphone. Use filter E5001-UVBLOCK for best results when imaging SmartGlow, SYBR or ETBR stained gels.

The E3100 myView™ Transilluminator has a surprisingly small footprint (smaller than a standard piece of paper). However, the viewing surface is large enough to accommodate a mid-sized gel or multiple smaller gels. The 16.5 x 13.5 cm filter glass is scratch resistant to allow band excision with a metal blade.

The **Accuris™ E3000 UV Transilluminator** features a space-saving design, with a width of only 10.5 inches, to fit perfectly in any busy laboratory. However, the 16 x 19 cm UV viewing surface is sized to accommodate large gels or multiple smaller gels. The illuminated surface is comprised of a special black glass which is easy to clean, durable and scratch resistant.

An array of high intensity UV bulbs coupled with an optimized filter provides even illumination across the viewing surface and allows detection of small sample quantities. The dual intensity switch can be used to lower the UV intensity to 50% to reduce DNA damage during long exposure times, or switch to high intensity (100%) for viewing weak fluorescent signals or for photo documentation.

The acrylic UV blocking cover allows safe viewing of samples and has two friction hinges on the front edge to allow angling of the cover for gel access. The cover can be positioned to 90° - straight up - to fit a gel imaging hood, such as the Accuris SmartDoc™ imaging enclosure.

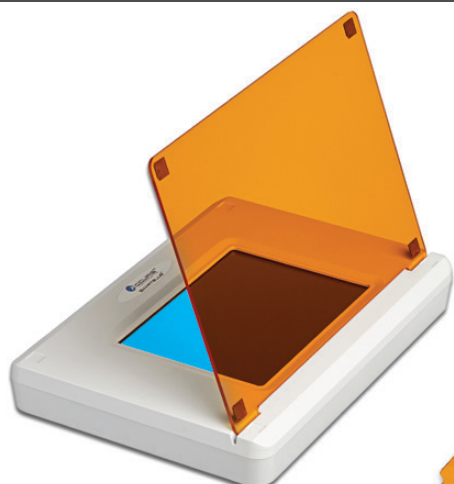
Ordering Information:

Item No.	Description:
E3100*	Accuris™ Compact UV Transilluminator
E3000*	Accuris™ UV Transilluminator
E5001-SD	SmartDoc™ Imaging Enclosure with orange photo filter
E5001-535	SmartDoc photo filter, 535nm for imaging green stains on UV
E5001-590	SmartDoc photo filter, 590nm for imaging EtBr on UV
E5001-UVBLOCK	SmartDoc filter, blocks UV wavelength, optimized for use on E3100 transilluminator
E4000-VG1	SmartBlue Plus Viewing Glasses

*115V with US plug. For 230V (EU plug), add (-E).

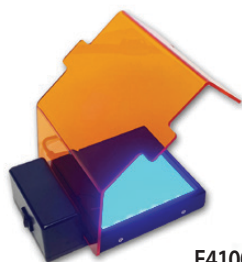
Technical Data:	E3100	E3000
Light Source:	4 x 6 Watt UV bulbs	4 x 8 Watt UV bulbs
Wavelength:	302nm	
Intensity Control:	N/A	Low (50%) or High (100%)
Viewing Surface:	16.5 x 13.5 cm	16 x 19 cm
Dimensions: (W x D x H)	10 x 8 x 2.75 in. / 25 x 20 x 7 cm	10.5 x 13 x 5.5 in. / 26.5 x 32.5 x 14 cm
Weight:	2 lbs. (0.9kg)	12 lbs. (5.5kg)
Electrical:	115V or 230V, 50Hz to 60Hz	
Warranty:	2 years	

SmartBlue™ Transilluminator



CE

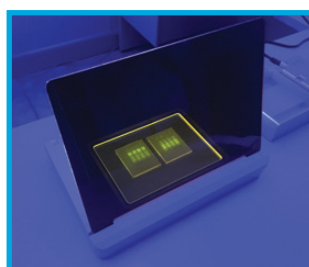
E4100



E4100

SMARTBLUE™

- + Safe blue light does not damage nucleic acid
- + Uniform Illumination (UI) provides even lighting
- + 465nm wavelength, optimal for green stains
- + Two position amber cover is also removable



Markers stained with SmartGlow™ shown on SmartBlue



Optional viewing glasses

Safer for samples, safer for you: Accuris SmartBlue Transilluminators are the perfect partner for the most common safe DNA stains. These instruments emit blue light at a wavelength of 465nm, perfect for excitation of most green fluorophors, including our Accuris' SmartGlow™, SYBR Green, SYBR Safe, SYBR Gold, GelStar, GelGreen, to name a few. The SmartBlue can also works for excitation of EtBr (though fluorescence is not as bright as with UV), see our Technical Bulletin with sample images. Exposing DNA to blue wavelength does not cause molecular damage, and results in a much higher downstream cloning efficiency as compared to even short UV light exposures. In addition, the visible blue light is not damaging to the user's skin and is less harmful to the eyes.* Two position filter cover: Both the E4100 and E4000 transilluminators come with emission filter covers. These amber covers, which rest above the viewing surface and gel, filter out the blue light, allowing the fluorescing DNA bands to be seen clearly. The covers are designed to fit flat for general gel viewing or to be placed at an angle to provide easy access to the gel for band excision. For documentation, the filter cover is easily removed completely.

Optional amber viewing glasses: Our E4000-VG1 SmartBlue Plus Viewing Glasses offer efficient blocking of the blue light wavelength from the transilluminators, allowing clear visualization of the fluorescing DNA bands without the filter cover in place. These convenient glasses are recommended for users that are frequently excising DNA bands from gels. SmartBlue Plus glasses also block 100% of UV wavelength so they can also be used for viewing gels on a UV transilluminator.

* The SmartBlue products use high intensity LED lights. Although the visible blue wavelength is significantly safer than UV light, it is recommended to not stare directly at the viewing surface without the amber cover in place.

Technical Data:	E4000	E4100
Light Source:	High Intensity Blue LEDs	
Wavelength:	Peak at 465nm	
Viewing Surface:	17 x 12 cm	10.5 x 10.5 cm
Viewing Surface:	Amber, filters blue light	
Dimensions: (W x D x H)	12.8 x 8.5 x 1.9 in. / 30.5 x 21.5 x 5 cm	6.7 x 4.72 x 2 in. / 7 x 12 x 5 cm
Weight:	2.6 lbs. (1.2kg)	
Electrical:	115V or 230V, 50Hz to 60Hz	
Warranty:	2 years	

Ordering Information:

Item No.	Description:
E4000*	SmartBlue™ Blue Light Transilluminator
E4100*	SmartBlue™ Mini Blue Light Transilluminator, includes amber cover
E5001-SD	SmartDoc™ Imaging Enclosure with orange photo filter
E4000-VG1	Orange viewing glasses for use with blue light, includes case

*115V with US plug. For 230V (EU plug), add (-E).



CE

E5001-SDB

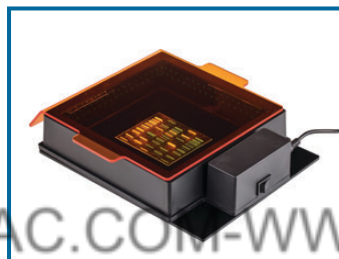
SMARTDOC™ 2.0

Gel Visualization and Smart Phone Imaging System

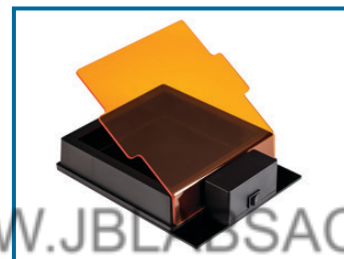
- + Quality imaging with any smart phone
- + Ideal for common safe stains (SmartGlow™, SYBR® Green, Gel Green, etc.)
- + Visible blue light will not damage DNA
- + Gel access for DNA band cutting
- + Imaging enclosure available individually and can be used on existing transilluminators

Technical Data:

Maximum gel size:	15 x 15cm
Excitation source:	High intensity blue LED
Photo filter:	Orange PMMA, 12mm aperture
Viewing cover:	Orange PMMA, 18cm x 18cm
Phone compatibility:	iPhone™, Android™, etc. (smart phones and tablets with a camera)
Dimensions (W x D x H):	9 x 7.5 x 8.6 in. / 23 x 19 x 22 cm
Weight:	2.6 lbs (1.2kg)
Electrical:	115V or 230V, 50Hz to 60Hz
Warranty:	2 years



Standalone blue light illumination base (Included with E5001-SDB)



Included orange cover can be tilted for gel access

Ordering Information:

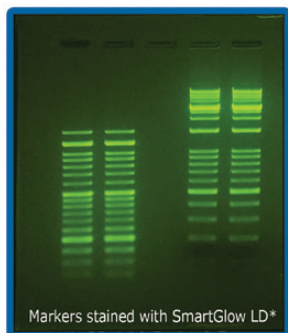
Item No.	Description:
E5001-SDB*	SmartDoc™ Gel Imaging System with blue light illumination and orange photo filter
E5001-SD	SmartDoc™ Gel Imaging Enclosure (use on existing transilluminator) w/orange photo filter
E5000-MAT	UV Blocking Mat
E5001-535	SmartDoc photo filter, 535nm for imaging green stains on UV
E5001-590	SmartDoc photo filter, 590nm for imaging EtBr on UV
E4000-VG1	Orange viewing glasses for use with blue light, includes case

*Includes US plug. For EU plug, please add (-E).



E5001-SD Enclosure shown on E4000 UV Transilluminator

SmartGlow™ Safe Nucleic Acid Stain



*Excitation with Accuris SmartBlue™ Transilluminator. Imaged using Accuris SmartDoc™ Blue with iPhone®.

- + Replaces hazardous EtBr
- + Excitation by UV or blue light
- + Non-mutagenic, environmentally safe
- + Two types: PS (Pre-Stain) LD (loading Dye)

Ordering Information:

Item No.	Description:
E4500-PS	SmartGlow™ PS (Pre-Stain), 1ml (20,000X)
E4500-LD	SmartGlow™ LD (Loading Dye) with stain, 1ml (6X)

myVolt™ Mini Power Supply



CE

Ordering Information:

Item No.	Description:
E2100*	myVolt™ Mini Power Supply, 100V / 200V

*Includes US plug. For EU plug, please add (-E).

- + Ideal for basic electrophoresis and compatible with standard electrophoresis gel tanks
- + Compact and simple with 100V or 200V output
- + Two pairs of output terminals

Technical Data:

Voltage Output:	100V or 200V constant
Current Output:	Max. 200mA
Max Wattage:	40W
Output Terminals:	2 pairs (wired in parallel)
Dimensions:	6.25 x 4.5 x 2.25in. / 16 x 11.5 x 5.7 cm
Weight:	0.9lbs (0.4kg)
Electrical:	100 - 240V, 50 - 60Hz
Warranty:	2 years

myVolt™ Touch Power Supply



CE

- + Touchscreen control
- + Dual orientation, auto-rotating display (fits anywhere in a crowded lab)
- + Intuitive programming
- + Control voltage, amperage, and run time



Dual Orientation, Auto-Rotating Display

The Accuris myVolt Touch is a work horse electrophoresis power supply that includes all of the performance and specifications needed for efficient separation of nucleic acids and proteins. The perfect companion for both horizontal and mini vertical gel tanks, the myVolt Touch incorporates some very unique user-friendly features:

Touch-screen Control Panel: Setting up an electrophoresis run with the myVolt Touch couldn't be easier... adjust voltage, current and time values, then touch "Start" to begin the run. Voltage, current and run time are all displayed.

Technical Data:

Output Settings:	Constant voltage or constant current
Voltage Output:	10 - 300V (5V increments)
Current Output:	5 - 400mA (5mA increments)
Max Wattage:	100W
Timer:	1 min. to 20 hours or continuous
Output Terminals:	4 pairs (wired in parallel)
Safety:	No load, short circuit, overload detection, over power detection
Display: (W x D x H)	2 x 2in. touchscreen LCD
Dimensions:	8.5 x 6.3 x 4.0in. / 21.5 x 15.5 x 9.75 cm
Weight:	2lbs (0.9kg)
Electrical:	115V, 60Hz or 230V, 50Hz
Warranty:	2 years

Dual Orientation, Auto-Rotating Display: The myVolt Touch packs plenty of power and features into a compact housing. But for those crowded lab benches, we've taken our design a step further. The myVolt can be oriented horizontally or vertically to fit the space available either on the lab bench or a shelf. When the power supply is tilted up vertically or back down horizontally, the display automatically rotates. Folding feet can be extended when the power supply is horizontal for convenient access and viewing of the touch screen. When set vertically, the touchscreen is also tilted up toward the user.

Ordering Information:

Item No.	Description:
E2301*	myVolt™ Touch Power Supply, 1 to 300V max, 400mA, 100W

*115V with US plug. For 230V (EU plug), please add (-E).

Accuris™ Taq DNA Polymerase and Master Mix



- For routine PCR, genotyping, colony PCR and fast PCR
- Proprietary buffer optimized for a variety of assay conditions
- Supplied with separate 5x buffer or as a convenient master mix

Item No.	Description	Size
PR1000-500	Taq DNA Polymerase	500u (5u/μl)
PR1000-1000	Taq DNA Polymerase	1000u (5u/μl)
PR1000-6000	Taq DNA Polymerase	6000u (5u/μl)
PR1001-200	2x Taq Master Mix	200 x 50μl Reactions
PR1001-1000	2x Taq Master Mix	1000 x 50μl Reactions
PR1001-R-200	2x Taq Red Master Mix	200 x 50μl Reactions
PR1001-R-1000	2x Taq Red Master Mix	1000 x 50μl Reactions

Red Master Mix includes a loading dye for direct electrophoresis after PCR

Accuris™ Hot Start Taq DNA Polymerase and Master Mix



- Exceptional sensitivity for low copy PCR
- Ideal for multiplex PCR & amplification of GC-rich DNA
- Same enhanced features as Accuris Taq Polymerase
- Optimized for fast cycling and reproducibility

Item No.	Description	Size
PR1000-HS-500	Hot Start Taq DNA Polymerase	500u (5u/μl)
PR1000-HS-1000	Hot Start Taq DNA Polymerase	1000u (5u/μl)
PR1000-HS-6000	Hot Start Taq DNA Polymerase	6000u (5u/μl)
PR1001-HS-200	Hot Start 2x Taq Master Mix	200 x 50μl Rxns
PR1001-HS-1000	Hot Start 2x Taq Master Mix	1000 x 50μl Rxns
PR1001-HSR-200	Hot Start 2x Taq Red Master Mix	200 x 50μl Rxns
PR1001-HSR-1000	Hot Start 2x Taq Red Master Mix	1000 x 50μl Rxns

Red Master Mix includes a loading dye for direct electrophoresis after PCR

Accuris™ Taq Plus DNA Polymerase & Master Mix



- Higher fidelity for long PCR amplicons, up to 35kb
- Ideal for problematic templates and TA cloning
- Better sensitivity and higher activity for low copy and long PCR

Accuris™ High Fidelity DNA Polymerase



- 50X higher fidelity than Taq polymerase
- Works with crude DNA samples
- Ideal for cloning, mutagenesis & microarrays
- Leaves a blunt end

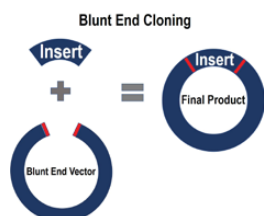
Item No.	Description	Volume
PR1000-TP-250	Taq Plus DNA Polymerase	250u (5u/μl)
PR1000-TP-500	Taq Plus DNA Polymerase	1000u (5u/μl)
PR1001-TP-200	2x Taq Plus Master Mix	200 x 50μl Reactions
PR1001-TP-1000	2x Taq Plus Master Mix	1000 x 50μl Reactions

Item No.	Description	Size
PR1000-HF-200	High Fidelity DNA Polymerase	200u (2u/μl)
PR1000-HF-1000	High Fidelity DNA Polymerase	1000u (2u/μl)

Accuris™ High Fidelity Master Mix



- 100X fidelity of native Taq
- Leaves blunt ends

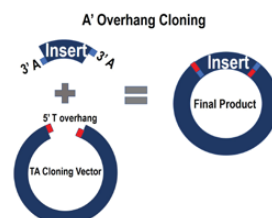


Item No.	Description	Size
PR1001-HF-200	High Fidelity Master Mix	200 x 25μl rxns
PR1001-HF-500	High Fidelity Master Mix	500 x 25μl rxns

Accuris™ High Fidelity Hot Start Master Mix



- 10X fidelity of native Taq
- Leaves A overhang



Item No.	Description	Size
PR1000-HF-200	High Fidelity DNA Polymerase	200 x 25μl rxns
PR1000-HF-1000	High Fidelity DNA Polymerase	500 x 25μl rxns

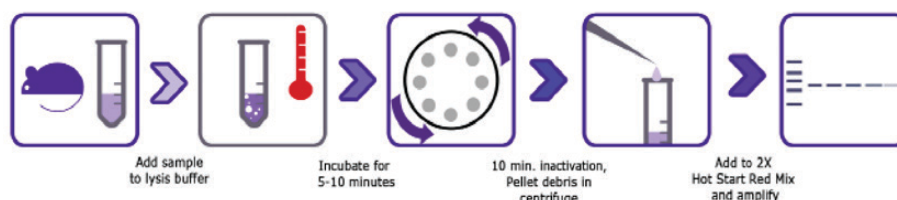
Accuris™ PCR Reagents

Accuris™ 1 Hour Mammalian Genotyping Kit



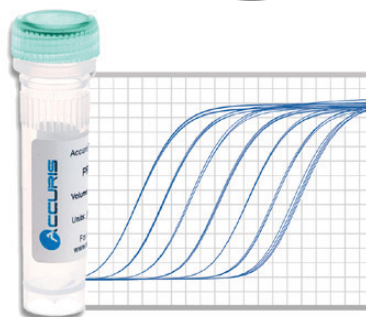
Accuris™ 1 Hour Mammalian Genotyping Kit
Includes Hot Start Taq Master Mix

- + DNA extraction and amplification in one hour
- + Proprietary lysis buffer optimized for ear punches, tail snips and other mammalian tissues
- + Single tube process - no organic solvents or clean up procedures



Item No.	Description	Reactions
PR1300-MG-80	Accuris 1 Hour Mammalian Genotyping Kit	80
PR1300-MG-400	Accuris 1 Hour Mammalian Genotyping Kit	400

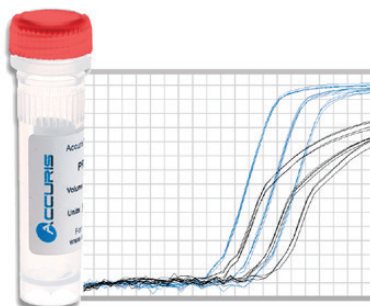
qMAX™ Green Real Time PCR Mix



- + Superior sensitivity and fast cycling with exceptional results
- + Includes Accuris Hot Start Taq for greater specificity & accuracy
- + Early C_t values and detection across a broad dynamic range
- + Ideal for low copy number templates

Item No.	Description	Reactions (20µl volume)
PR2000-L-100	qMAX Green, Low ROX qPCR Mix	100
PR2000-L-500	qMAX Green, Low ROX qPCR Mix	500
PR2000-L-1000	qMAX Green, Low ROX qPCR Mix	1000
PR2000-H-100	qMAX Green, High ROX qPCR Mix	100
PR2000-H-500	qMAX Green, High ROX qPCR Mix	500
PR2000-H-1000	qMAX Green, High ROX qPCR Mix	1000
PR2000-N-100	qMAX Green, No ROX qPCR Mix	100
PR2000-N-500	qMAX Green, No ROX qPCR Mix	500
PR2000-N-1000	qMAX Green, No ROX qPCR Mix	1000

qMAX™ Probe Real Time PCR Mix



- + Same high efficiency for multiplex and singleplex reactions
- + Includes Accuris Hot Start Taq Polymerase for greater specificity and accuracy
- + Compatible with popular hydrolysis and beacon probes
- + Early C_t values and detection across a broad dynamic range

Item No.	Description	Reactions (20µl volume)
PR2001-L-100	qMAX Probe, Low ROX qPCR Mix	100
PR2001-L-500	qMAX Probe, Low ROX qPCR Mix	500
PR2001-L-1000	qMAX Probe, Low ROX qPCR Mix	1000
PR2001-H-100	qMAX Probe, High ROX qPCR Mix	100
PR2001-H-500	qMAX Probe, High ROX qPCR Mix	500
PR2001-H-1000	qMAX Probe, High ROX qPCR Mix	1000
PR2001-N-100	qMAX Probe, No ROX qPCR Mix	100
PR2001-N-500	qMAX Probe, No ROX qPCR Mix	500
PR2001-N-1000	qMAX Probe, No ROX qPCR Mix	1000

Please visit www.accuris-usa.com for additional details on the Accuris PCR Reagents
INFORMACION@JBLABSAC.COM-WWW.JBLABSAC.COM

qMAX™ cDNA Synthesis Kit



- Rapidly generate high quality qPCR ready cDNA
- Thermostable qMax RT with RNase inhibitor
- Optimized for use across a wide dynamic range
- Two tube format for easy reaction set up
- Blend of oligo (dT) and hexamer primers for unbiased, complete sequence representation

Item No.	Description	Reactions (20µl volume)
PR2100-C-25	qMAX cDNA Synthesis Kit	25
PR2100-C-100	qMAX cDNA Synthesis Kit	100
PR2100-C-250	qMAX cDNA Synthesis Kit	250

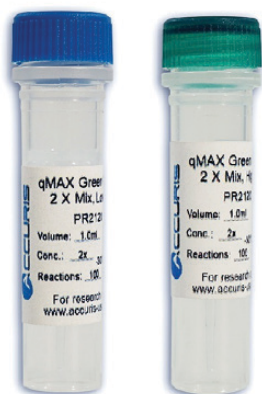
qMAX™ First Strand cDNA Synthesis Flex Kit



- Rapidly generate high quality qPCR ready cDNA
- Thermostable qMax RT with RNase inhibitor
- Optimized for use across a wide dynamic range
- Separate tubes of oligo (dT) and hexamer primers for greater flexibility in assay design

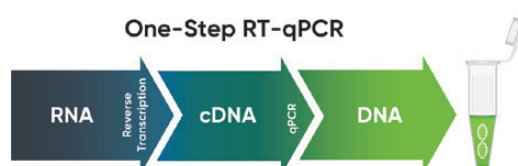
Item No.	Description	Reactions (20µl volume)
PR2110-C-50	qMAX cDNA Synthesis Kit	50
PR2110-C-200	qMAX cDNA Synthesis Kit	200

Accuris™ One-Step Kits



Accuris™ One-Step RT-qPCR Mix
cDNA Synthesis and qPCR in a single tube

- RNA to cDNA to qPCR, in one reaction tube
- High purity enzyme formulation
- Enhanced stability and performance
- Incorporates Accuris Hot-Start Taq
- Available for green fluorescence or probe detection
- Multiplex formulation available for multiple target amplification



Item No.	Description	Reactions (20µl volume)
PR2120-L-100	qMAX Green, One-Step RT-qPCR Kit, Low Rox	100
PR2120-H-100	qMAX Green, One-Step RT-qPCR Kit, High Rox	100
PR2121-L-100	qMAX Probe, One-Step RT-qPCR Kit, Low Rox	100
PR2121-H-100	qMAX Probe, One-Step RT-qPCR Kit, High Rox	100
PR2122-L-100	qMAX Probe, One-Step Multiplex RT-qPCR Kit, Low Rox	100
PR2122-H-100	qMAX Probe, One-Step Multiplex RT-qPCR Kit, High Rox	100

Above items available in 500 and 1000 reaction pack size. Add "-500" or "-1000" to Item No.

Centrifuges ■ Shakers/Mixers ■ Homogenizers
Sterilizers ■ Temperature Control ■ Accuris Instruments

22-23

Benchmark
Scientific 

PO Box 709
Edison, NJ 08818
Phone: 908-769-5555
Fax: 732-313-7007
Email: Info@BenchmarkScientific.com
www.BenchmarkScientific.com